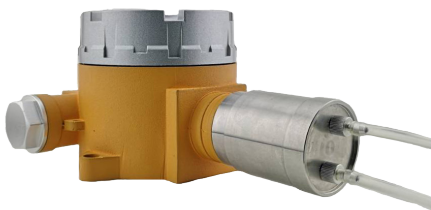
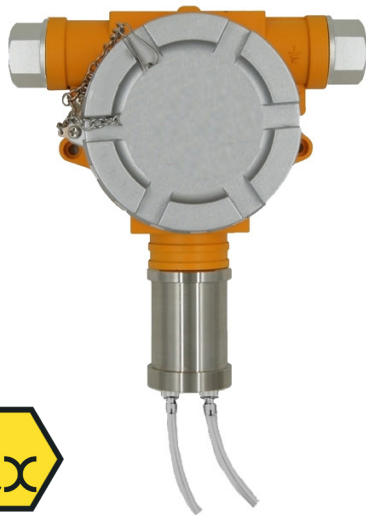


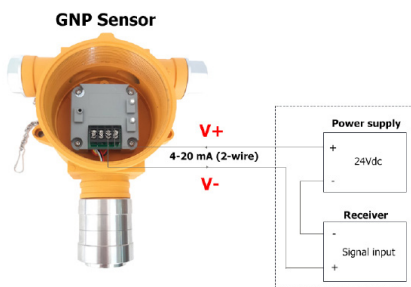
GAS DETECTOR GIP-P-CO2



sensor made in Switzerland



Wiring diagram



Ordering code

GNP - P - CO2 -

- 2000 : Range 0...2000 ppm
- 5000 : Range 0...5000 ppm
- 10000 : Range 0...10000 ppm
- 5V : Range 0...5 %vol
- 20V : Range 0...20 %vol
- 50V : Range 0...50 %vol
- 100V : Range 0...100 %vol

www.omi.co.th

Omega Measuring Instrument Co., Ltd.

Tel : 02-105-4676
 Fax : 02-903-0080 ext. 6867
 Email : info@omi.co.th
 Line : @omith

Features

- High quality sensor of Membrapor brand from Switzerland
- Good sealing, anti-corrosion, explosion-proof and anti EMI, RFI function
- Round casting stainless steel housing is suitable for offshore platforms, as well as high temperature, high humidity and other harsh environments

Technical Data

Gas type : Carbon dioxide (CO₂)
Measuring type : Pipeline
Measuring range : 0...2000 ppm/ 0...5000 ppm/ 0...10000 ppm
 0...5/ 0...20/ 0...50/ 0...100 %vol
Accuracy : ±2 %FS
Resolution : 1 ppm/ 1 ppm/ 1 ppm
 0.01 %vol/ 0.01 %vol/ 0.1 %vol/ 0.1 %vol
Sensor type : Nondispersive infrared sensor (NDIR)
Life expectancy : 5...10 years
Pre-Heating time : 60 sec
Operating temperature (body) : -20...+60 °C
Operating temperature (sensor) : 0...+50 °C
Operating humidity : 0...85 %RH
Operating pressure : 700...1300 mbar
Operating Gas flow rate : 0.4 - 0.8 l/min (Recommend 0.5 l/min)
Signal output : 4-20 mA (2-wire)
Power supply : 24 Vdc
Current consumption : 20...200 mA
Power consumption : ≤ 3W
Pipe connection : connection for tube I.D 4 mm
Body dimension : 195 x 178 x 90mm (H x L x D)
Weight : 1.65 kg
Body material : Cast aluminum
Electrical connection : M26 x P2.0
Explosion proof : Ex d IIC T6 Gb
Protection : IP65

