

## Air and Gas Flow Meter 7102-series



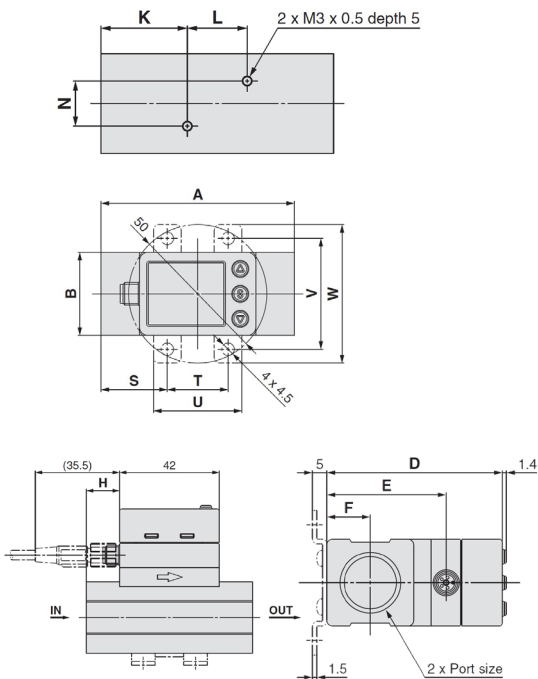
### Features

- Three-colour/two screen LCD display
- Wide range of flow measurement
- Compact and Saving space
- Bypass structure available
- Users are able to select fluid by using the button
- Application; flow control of equipment, suction check, accumulated indication of operating flow rate or residual amount

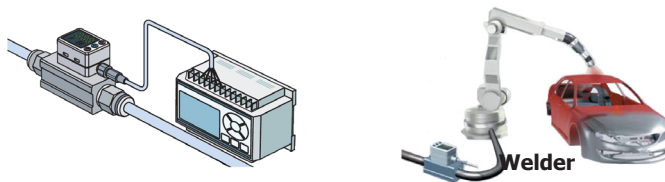
### Technical Data

**Measuring principle :** Thermal type  
**Application :** Air and gases  
**Measuring range :** 10...1000 l/min  
**Accuracy :** ±3%F.S.  
**Repeatability :** ±1%F.S. (±2 F.S. when response time is set to 0.05 s)  
**Process connection :** Female thread connection G 1/2  
**Indication unit :** l/min, CFM (ft<sup>3</sup>/min)  
**Accumulated flow range :** Max. 999,999,999 liters  
**Operating temperature :** 0...50 °C (with no freezing and condensation)  
**Storage temperature :** -10...60 °C  
**Operating humidity :** 35...85%R.H. (with no condensation)  
**Operating pressure :** 0...8 bar  
**Power supply :** 24 Vdc ±10%  
**Current consumption :** 55mA or less  
**Weight :** 170g  
**Protection :** IP65

### Dimension



### Application



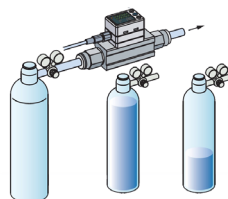
Flow control of equipment

Symbol	Port size	A	B	D	E	F	H	K	L	N
Model PFMC7501/7102	G 1/2	76	30	60.6	41.2	15	14	26	18	13.6

Symbol	Bracket dimensions				
Model	S	T	U	V	W
PFMC7501/7102	24	22	32	40	50

### www.omi.co.th

บริษัท โอเมกา เมชเชอริง อินสตรูเมนต์ จำกัด  
 Tel : 02-105-4676  
 Fax : 02-903-0080 ext. 6867  
 Email : info@omi.co.th  
 Line : @omith



Accumulated indication