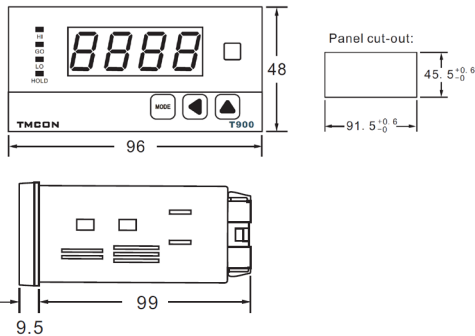


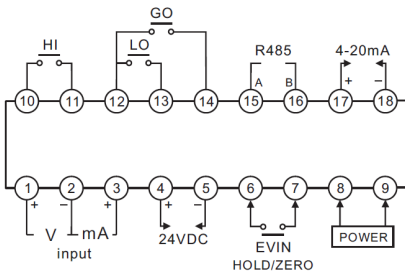
Display Indicator T904-FSVA



Drawing



Wiring Diagram



Ordering code

T904 - FSVA -

Power supply
- : 100...240 Vac
D : 12...24 Vdc

Output type
3 : Relay, 0/4...20mA
5 : Relay, 0/4...20mA, RS485

Features

- Universal analog output
- High/Low scale function.
- Monitoring function for max. and min. display value function, display cycle delay function, Zero function, High display correction function, Current output scale function.
- Adjustable value i.e. addition, subtraction and multiplication of display value.
- High measurement accuracy
- The average processing is available for filtering noise
- It can be set high and low alarm points

Technical Data

Input type : 0...20mA, 4...20mA, 0...100mV, 0...200mV, 0...500mV, 0...1V, 1...5V, 0...5V, 2...10 and 0...10V

Resolution : according to 4 digits

Display accuracy : $\pm 0.1\%$ rdg + 2digit

Display method : 7 Segment LED display (red)

Max. indicator range : -1999...9999

Sampling cycle : 50ms (DC type), 16.6ms (AC type)

Operating temperature : -10...50°C

Operating humidity : 35...85 %RH

Relay output : 3 x Relay, 250Vac/3A or 30Vdc/3A

Auxiliary power supply : 24 Vdc 50mA max.

Signal output : 0/4...20mA

Power supply : 220 Vac or 24Vdc

Power consumption : $\leq 5VA$

Dimension : 96 x 48 x 108.5 mm (WxHxD)

Protection class : IP65 (front side)

www.omi.co.th

Omega Measuring Instrument Co., Ltd.

Tel : 02-105-4676

Fax : 02-903-0080 ext. 6867

Email : info@omi.co.th

Line : @omith