

## TEMPERATURE DATA LOGGER DS1922E



### Features

- High temperature application
- Small dimension
- Low price
- Suitable for food preparation and processing, environmental studies/ monitoring.

### Technical Data

**Temperature range :** +15...+140 °C  
**Temperature resolution :** ±0.5 °C  
**Temperature Accuracy :** ±1.5 °C (from +110 to +140 °C)  
 ±7.0 °C (from +15 to +110 °C)

**Sampling rate :** 1s to 273hr (Programable)

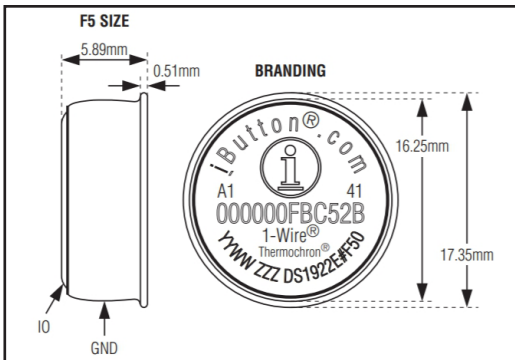
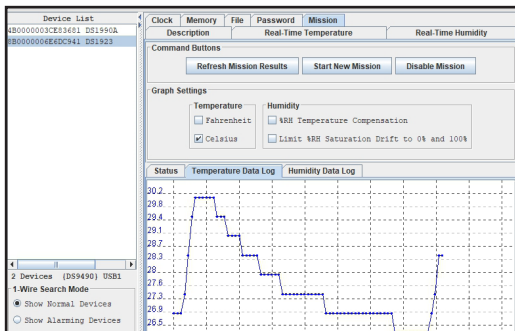
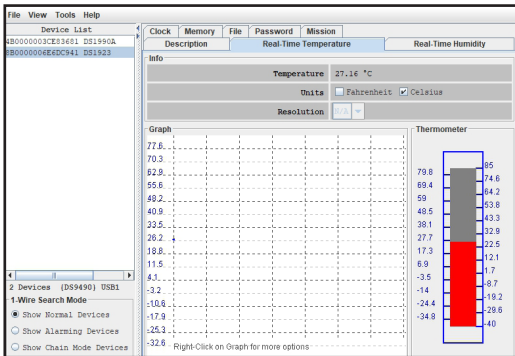
**Storage data :** 4096 data

**Export file :** Exel

**Battery Life :** Storage or operation above +50°C significantly reduces battery life with an upper limit of 300hr cumulative at +140°C. The recommended storage temperature for maximum battery lifetime is between +5°C and +35°C

**Dimension :** Ø17.35 mm x 5.89 mm

**Protection :** IP56



### Export file

Date/Time	Unit	Value							
23/7/2563	13:32:36	C	27.097						
23/7/2563	13:32:46	C	27.097						
23/7/2563	13:32:56	C	27.097						
23/7/2563	13:33:06	C	27.597						
23/7/2563	13:33:16	C	28.596						
23/7/2563	13:33:26	C	29.595						
23/7/2563	13:33:36	C	30.095						
23/7/2563	13:33:46	C	30.095						
23/7/2563	13:33:56	C	30.095						
23/7/2563	13:34:06	C	30.095						
23/7/2563	13:34:16	C	30.095						
23/7/2563	13:34:26	C	30.095						
23/7/2563	13:34:36	C	29.595						
23/7/2563	13:34:46	C	29.595						
23/7/2563	13:34:56	C	29.595						

### Accessories (Option)



**Model :** DT9490  
**Description :** USB interface for connecting with PC

**Model :** PT68  
**Description :** Protective capsule for data logger (IP68)

[www.omi.co.th](http://www.omi.co.th)

บริษัท โอเมกา เมชเชอริ่ง อินสตรูเมนต์ จำกัด  
 Tel : 02-105-4676  
 Fax : 02-903-0080 ext. 6867  
 Email : info@omi.co.th  
 Line : @omith