

## Air and Gas Flow Meter 7501-series



### Features

- Three-colour/two screen LCD display
- Wide range of flow measurement
- Compact and Saving space
- Bypass structure available
- Users are able to select fluid by using the button
- Application; flow control of equipment, suction check, accumulated indication of operating flow rate or residual amount

### Technical Data

**Measuring principle :** Thermal type

**Application :** Air and gases

**Measuring range :** 5...500 l/min

**Accuracy :**  $\pm 3\%$ F.S.

**Repeatability :**  $\pm 1\%$ F.S. ( $\pm 2$  F.S. when response time is set to 0.05 s)

**Process connection :** Female thread connection G 1/2

**Indication unit :** l/min, CFM (ft<sup>3</sup>/min)

**Accuracy :**  $\pm 3\%$ F.S.

**Repeatability :**  $\pm 1\%$ F.S. ( $\pm 2$  F.S. when response time is set to 0.05 s)

**Accumulated flow range :** Max. 999,999,999 liters

**Operating temperature :** 0...50 °C (with no freezing and condensation)

**Storage temperature :** -10...60 °C

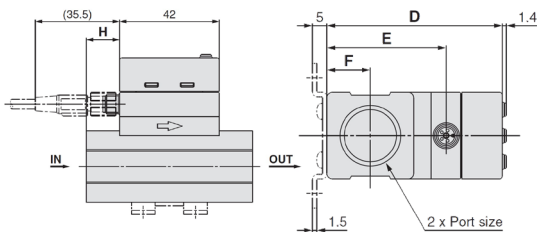
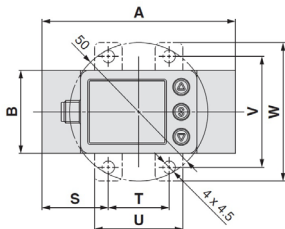
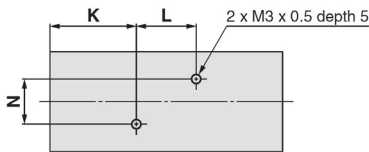
**Operating humidity :** 35...85%R.H. (with no condensation)

**Operating pressure :** 0...8 bar

**Power supply :** 24 Vdc  $\pm 10\%$

**Current consumption :** 55mA or less

### Dimension



Symbol	Port size	A	B	D	E	F	H	K	L	N
Model PFMC7501/7102	G 1/2	76	30	60.6	41.2	15	14	26	18	13.6

Symbol	Bracket dimensions				
Model	S	T	U	V	W
PFMC7501/7102	24	22	32	40	50

### www.omi.co.th

บริษัท โอเมกา เมชเชอริง อินสตรูเมนต์ จำกัด

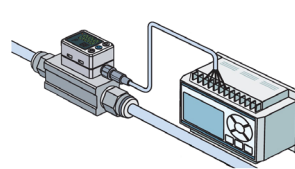
Tel : 02-105-4676

Fax : 02-903-0080 ext. 6867

Email : info@omi.co.th

Line : @omith

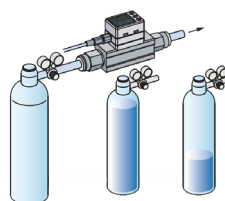
### Application



Flow control of equipment



Welder



Accumulated indication