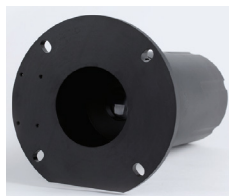
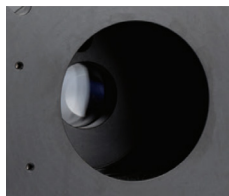
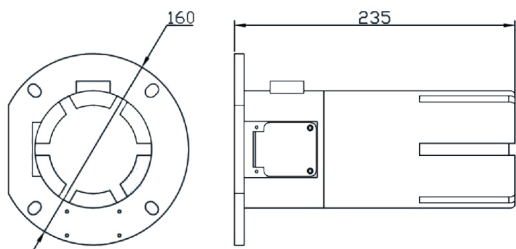


## EXPLOSION PROOF DUST MONITOR EPDM-60



### Drawing



### Ordering code

EPDM - 60

- 00 : None explosion proof
- 50 : with explosion proof

### www.omi.co.th

**Omega Measuring Instrument Co., Ltd.**  
 Tel : 02-105-4676  
 Fax : 02-903-0080 ext. 6867  
 Email : info@omi.co.th  
 Line : @omith

### Features

- The EPDM-6000 of online laser dust monitor adopts the principle of laser backscattering.
- Laser backscattering and large dynamic adaptive phase-locking amplification technology make a real-time monitoring and a large measurement range.
- With the double certification of gas explosion-proof and dust explosion-proof suitable to hazardous areas.
- The standard output signal can upload the dust concentration to the PLC, DCS, IPC etc.

### Technical Data

- Medium type** : Dust (particle  $\geq 5\mu\text{m}$ )
- Measuring range** : 0...4000 mg/m<sup>3</sup>
- Principle** : Laser backscattering
- Accuracy** : <2% of full scale
- Response time** :  $\leq 10\text{s}$
- Space range** : 0.7...5 m
- Operating temperature** : -20...+50 °C
- Operating humidity** : 10...95 %RH
- Operating pressure** : 80...120 kPa
- Signal output** : 4...20mA
- Communication** : RS485
- Power supply** : 24 Vdc
- Power consumption** :  $\leq 2.5\text{ W}$
- Dimension** : 235 x 160 x 160 mm (HxWxD)
- Material** : Aluminium alloy
- Weight** : 2.8 kg
- Protection class** : IP65
- Approval** : Exib II BT4 Gb and ExibD21T130°C Gb (option)

### Application

- **Dust monitor in pipe/flue**



- **Environment**

