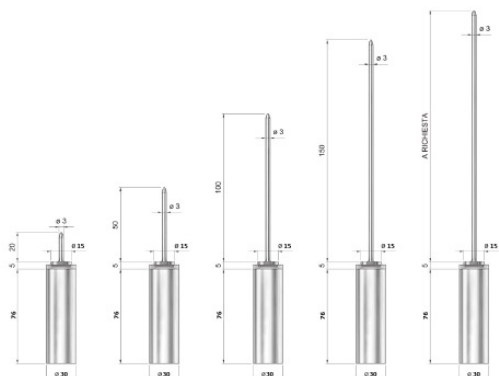


HIGH TEMPERATURE DATA LOGGER

S-Radio



Drawing



Ordering code

S-Radio

20 : Probe length 20 mm

50 : Probe length 50 mm

100 : Probe length 100 mm

150 : Probe length 150 mm

On demand : Probe length 10...175 mm

Features

- Real time monitoring data logger
- With different lengths rigid probe for penetration
- Completely food grade and waterproof
- All software calculate lethality value (F0, PU, A0 ecc.)
- Low battery consumption for an extended battery life
- User replaceable battery (software shows battery status)
- Very easy to deploy in any type of package
- Accredia (NIST equivalent) traceable calibration certificate included
- It is supported by the TS Manager software for validation-compatible with the FDA 21 CFR Part 11 and GAMP 5 regulations.
- Application for Sterilisation, Pasteurisation, Food and Beverage, Pharmaceutical, Healthcare, Medical, Laboratories, Validation

Technical data

Temperature range : -40...+140°C

Accuracy : $\pm 0.1^\circ\text{C}$ (within the calibration range)

Resolution : 0.01 °C

Memory capacity : 121,171

Battery type : high temperature Lithium battery

Battery life (@different interval) : more than 5 years @ 1 minute or 1 month @ 1 second (3,800,000 acquisitions @ 1 second step continuously (calculated time @25°C)). Storage or operation above +50°C significantly reduces battery life.

Interval : 1s...24Hrs

Material : Stainless steel AISI316L, PEEK

Operate system : Windows XP, Vista, 7, 8, 10

Exporting : PDF, Excel

Dimension : 76 x $\Phi 30$ mm (Body), 3 x $\Phi 15$ mm (Probe base)

Weight : 76g

Pressure resistance : 6 barG

Protection type : IP68

www.omi.co.th

บริษัท โอเมก้า เมชเชอริง อินสตรูเมนต์ จำกัด

Tel : 02-105-4676

Fax : 02-903-0080 ext. 6867

Email : info@omi.co.th

Line : @omith

ACCESSORIES for S-Radio

These are necessary equipments that using with products and increase efficiency.

DiskInterface HS : is the connection bay used in all model for downloading data and programming all models of high temperature data loggers



Universal Multibay : is the multiple connection bay used for downloading data and programming all models of high temperature data loggers. It allows to connect up to 5 data loggers of each supported model to be programmed and downloaded at the same time.



USB Radio Receiver : is the receiver for wireless used in all S-Radio model for real time monitoring.



Autoclave special antenna : A special antenna to be inserted directly into the autoclave for optimal signal receiving is available. The antenna can be connected to any radio receiver instead of the standard antenna provided



4-20mA Radio Receiver: is the receiver that can be connected to the machinery's PLC



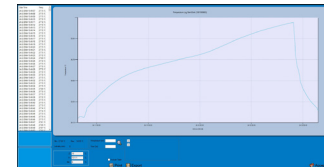
TS17MU : used to open data loggers for battery replacement. (Use 2 ea. for opening)



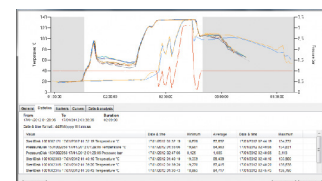
TS10SPCRB : Battery and O-ring can be used in all type of S-Radio. if used below -30°C, battery life will be highly reduced



SPD Software (FREE) : It allows to start the devices setting the start delay, mission duration, notes. After download data are then displayed on graph, with zoom function, and table, exportable in Excel.



TS Manager Software : it allowed to do everything as a SPD software and has more functions such as multi-user, having login and password, Synchronized data table with statistics, etc. Downloadable from TecnoSoft website and works with its hardware protection key only.



www.omi.co.th

บริษัท โอเมก้า เมชเชอริง อินสตรูเมนต์ จำกัด

Tel : 02-105-4676

Fax : 02-903-0080 ext. 6867

Email : info@omi.co.th

Line : @omith