

TEMPERATURE DATA LOGGER for FOOD INDUSTRY DF22



vary length size of probe!



Ordering code

DF22 -

- N : No probe
- 20 : Probe length 20 mm
- 50 : Probe length 50 mm
- 100 : Probe length 100 mm
- 150 : Probe length 150 mm
- 200 : Probe length 200 mm

www.omi.co.th

Omega Measuring Instrument Co., Ltd.
 Tel : 02-105-4676
 Fax : 02-903-0080 ext. 6867
 Email : info@omi.co.th
 Line : @omith

Features

- DF22 that are **ideal for food**, pharmaceutical and other applications where a high temperature data-logger is required.
- DF22 is housed in a waterproof, food grade 316 stainless steel case to protect the logger from corrosion, impact and moisture (IP67).
- The ThermoData® logger software allows the user to programme the logging sample/interval rate (1 to 255 minutes), the real-time clock, °C/°F, delayed start

Technical data

Measurement range : -20....+125°C

Accuracy : ±0.5°C

Resolution : 0.1°C

Unit : °C/°F

Memory capacity : 16,000 reading

Interval time : 1...255 minutes

Battery type : 3.6 volt 2/3 AA Lithium

Battery life : 3 years (depend on condition and interval time)

Communication : USB

Data file : excel and pdf

Material : Stainless steel

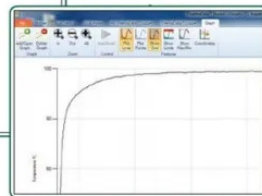
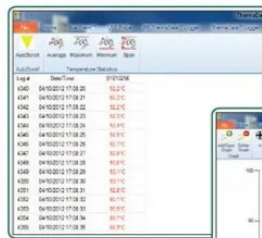
Dimension (probe) : Ø4.5 x 100 mm

Dimension (device) : Ø22.5 x 129mm

Weight : approx. 170g

Protection : IP67

ThermoData Studio Software



Stainless Steel Pro Logger

Instrument Name: Tech Sales Freezer

Instrument Details		Log Summary	
Instrument Serial	02000000	Total Time Logging	000:00:00
Firmware Version	1.0.0.0	Total Readings	31
Current Reading	22.00 °C (81.60 °F)	Readings in Alarm	0
Latest Reading	22.00 °C (81.60 °F)	Max Temperature	2.0°C
Input Conditions	000:00:00	Average Temperature	1.00 °C
Recording Interval	000:00:00	Min Temperature	1.00 °C
High Alarm	123.0°C	Total time in Alarm	0000:00:00
Low Alarm	123.0°C	Total time out of Alarm	000:00:00

Longest 5 Alarms				Calibration
Index	Start	Duration	Deviation	Min Value
1	01:01:07 11:44:25	0000:00:00	1.0 °C	
2				
3				
4				
5				

Handwritten Notes: _____
 Date: _____

Instructions: Please send inputs both to: info@omi.co.th