



Overview Probes VA40

Vortex Flow Sensors + Accessories

จัดจำหน่ายโดย

บริษัท โอเมก้า เมชเชอริง อินสตรูमेंท์ จำกัด

50/23 หมู่ 3 ต.มหาสวัสดิ์ อ.บางกรวย จ.นนทบุรี 11130

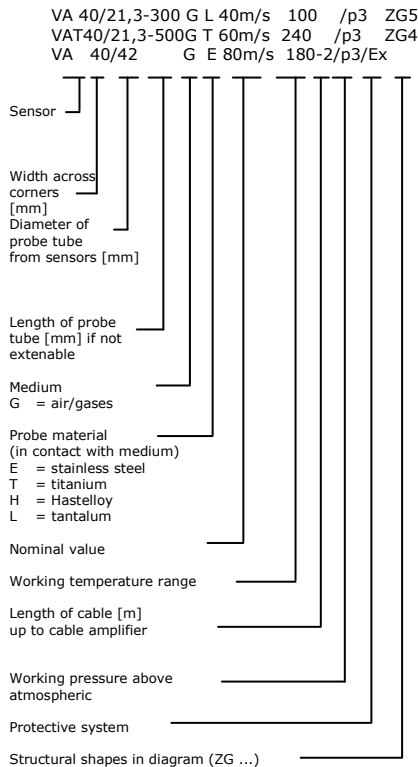
Tel : 02 105 4676

Fax : 02 903 0080 ext. 6867

Email : info@omi.co.th



TÜV qualification tested
for continuous measurement of
exhaust flow rate in the case of
officially approved outgoing air
plants, garbage incinerating
plants and industrial furnaces
according to TA-Luft, 13th and
17th BImSchV.



Probes VA as in drawing 5, also available in protective system Ex

| | article no. |
|-------------------------------------|-------------|
| VA 40/21,3-300 GE 40m/s 100/p3 ZG5 | B009/500 |
| VA 40/21,3-300 GH 40m/s 100/p3 ZG5 | B009/506 |
| VA 40/21,3-300 GT 40m/s 100/p3 ZG5 | B009/510 |
| VA 40/21,3-300 GL 40m/s 100/p3 ZG5* | B009/528 |
| VA 40/21,3-300 GE 40m/s 180/p3 ZG5 | B009/514 |
| VA 40/21,3-300 GH 40m/s 180/p3 ZG5 | B009/520 |
| VA 40/21,3-300 GT 40m/s 180/p3 ZG5 | B009/524 |
| VA 40/21,3-300 GL 40m/s 180/p3 ZG5* | B009/530 |
| VA 40/21,3-300 GE 40m/s 240/p3 ZG5 | B009/531 |
| VA 40/21,3-300 GH 40m/s 240/p3 ZG5 | B009/532 |
| VA 40/21,3-300 GT 40m/s 240/p3 ZG5 | B009/533 |

* subject to tantalum material price increase

Probes VAT as in drawing 5 with temperature sensor Pt100 under the sensor cap. Output temperature 4-wire Pt100 or 4 ... 20 mA, t/4 ... 20 mA output 2-wire configured.

| | article no. |
|-------------------------------------|-------------|
| VAT 40/21,3-300 GE 40m/s 100/p3 ZG5 | B009/550 |
| VAT 40/21,3-300 GH 40m/s 100/p3 ZG5 | B009/556 |
| VAT 40/21,3-300 GT 40m/s 100/p3 ZG5 | B009/560 |
| VAT 40/21,3-300 GE 40m/s 180/p3 ZG5 | B009/564 |
| VAT 40/21,3-300 GH 40m/s 180/p3 ZG5 | B009/570 |
| VAT 40/21,3-300 GT 40m/s 180/p3 ZG5 | B009/574 |
| VAT 40/21,3-300 GE 40m/s 240/p3 ZG5 | B009/579 |
| VAT 40/21,3-300 GH 40m/s 240/p3 ZG5 | B009/580 |
| VAT 40/21,3-300 GT 40m/s 240/p3 ZG5 | B009/581 |

Extendable probes

Probes VA as in drawing 2, also available in protective system Ex

| | article no. |
|------------------------------|-------------|
| VA 40/42 GE 40m/s 100/p3 | B009/200 |
| VA 40/42,4 GH 40m/s 100/p3 | B009/208 |
| VA 40/42 GT 40m/s 100/p3 | B009/212 |
| VA 40/42 GE 40m/s 180-2/p3 | B009/216 |
| VA 40/42,2 GH 40m/s 180-2/p3 | B009/222 |
| VA 40/42 GT 40m/s 180-2/p3 | B009/226 |
| VA 40/42 GE 40m/s 240-2/p3 | B009/230 |
| VA 40/42,4 GH 40m/s 240-2/p3 | B009/231 |
| VA 40/42 GT 40m/s 240-2/p3 | B009/232 |

Probes VAT as in drawing 2 with temperature sensor Pt100 under the sensor cap. Output temperature 4-wire Pt100

| | article no. |
|-------------------------------|-------------|
| VAT 40/42 GE 40m/s 100/p3 | B009/250 |
| VAT 40/42,4 GH 40m/s 100/p3 | B009/258 |
| VAT 40/42 GT 40m/s 100/p3 | B009/262 |
| VAT 40/42 GE 40m/s 180-2/p3 | B009/266 |
| VAT 40/42,4 GH 40m/s 180-2/p3 | B009/272 |
| VAT 40/42 GT 40m/s 180-2/p3 | B009/276 |
| VAT 40/42 GE 40m/s 240-2/p3 | B009/280 |
| VAT 40/42,4 GH 40m/s 240-2/p3 | B009/281 |
| VAT 40/42 GT 40m/s 240-2/p3 | B009/282 |
| Direction indicator RZ42 | B099/957 |
| Direction indicator RZ42,4 | B099/958 |

Probes of an exact length

Probes VA as in drawing 4, also available in protective system Ex, Prices without probe guide piece SF (page 4)

| | article no. |
|------------------------------------|-------------|
| VA 40/21,3-500 GE 40m/s 100/p3 ZG4 | B009/400 |
| VA 40/21,3-500 GH 40m/s 100/p3 ZG4 | B009/406 |
| VA 40/21,3-500 GT 40m/s 100/p3 ZG4 | B009/410 |

| | |
|------------------------------------|----------|
| VA 40/21,3-500 GE 40m/s 180/p3 ZG4 | B009/414 |
| VA 40/21,3-500 GH 40m/s 180/p3 ZG4 | B009/420 |
| VA 40/21,3-500 GT 40m/s 180/p3 ZG4 | B009/424 |

| | |
|------------------------------------|----------|
| VA 40/21,3-500 GE 40m/s 240/p3 ZG4 | B009/428 |
| VA 40/21,3-500 GH 40m/s 240/p3 ZG4 | B009/429 |
| VA 40/21,3-500 GT 40m/s 240/p3 ZG4 | B009/430 |

Probes VAT as in drawing 4 with temperature sensor Pt100 under the sensor cap. Output temperature 4-wire Pt100 or 4 ... 20 mA, t/4 ... 20 mA output 2-wire configured. Prices without probe guide piece SF (page 4)

| | |
|-------------------------------------|----------|
| VAT 40/21,3-500 GE 40m/s 100/p3 ZG4 | B009/450 |
| VAT 40/21,3-500 GH 40m/s 100/p3 ZG4 | B009/456 |
| VAT 40/21,3-500 GT 40m/s 100/p3 ZG4 | B009/460 |

| | |
|-------------------------------------|----------|
| VAT 40/21,3-500 GE 40m/s 180/p3 ZG4 | B009/464 |
| VAT 40/21,3-500 GH 40m/s 180/p3 ZG4 | B009/470 |
| VAT 40/21,3-500 GT 40m/s 180/p3 ZG4 | B009/474 |

| | |
|-------------------------------------|----------|
| VAT 40/21,3-500 GE 40m/s 240/p3 ZG4 | B009/478 |
| VAT 40/21,3-500 GH 40m/s 240/p3 ZG4 | B009/479 |
| VAT 40/21,3-500 GT 40m/s 240/p3 ZG4 | B009/480 |

Additional price for probe tube length Ø 21,3 mm different than above

| | article no. |
|---|-------------|
| Change of the standard installation length | B099/800 |
| Other installation length 'stainless steel' each 100 mm | B099/800-MM |
| Other installation length 'titanium' each 100 mm | B099/801-MM |
| Other installation length 'Hastelloy' each 100 mm | B099/802-MM |
| Other installation length 'tantalum' each 100 mm | B099/803-MM |

Maximum admissible lengths

| | |
|----------------------------|---------------------------|
| for probes as in drawing 4 | |
| Measure C | 500 ... 1500 mm |
| | ... 2000 mm at v < 20 m/s |

| | |
|--|-----------------|
| for probes as in drawing 5 | |
| made of stainless steel, Hastelloy or titanium | |
| Measure A | 300 ... 1500 mm |

Options

| | article no. |
|----------------------|-------------|
| Nominal value 60 m/s | V_VA_60 |
| 80 m/s | V_VA_80 |

Probes with a terminal value of 60 m/s may also be used with a U2a transducer up to max. 50 m/s. Probes with a terminal value of 80 m/s require an electronic evaluation unit VSM 80 m/s!

| | |
|---|-------|
| Ex design for flow sensors VA as in drawing ZG4 and 5, but not VAT... ATEX category 1/2G (zone 0) Ex ia IIC T6 and category 1/2D (zone 20) Ex ia IIIC TX | VAEX0 |
|---|-------|

| | |
|---|-------|
| Ex design for flow sensors VA as in drawing ZG2, but not VAT... ATEX category 2G (zone 1) Ex ia IIC T6 | VAEX1 |
|---|-------|

| | |
|--|-------|
| Ex design for flow sensors VA, VAT: ATEX category 3G (zone 2) Ex na IIC T6 and 3D (zone 22) Ex tc IIIC TX | VAEX2 |
|--|-------|

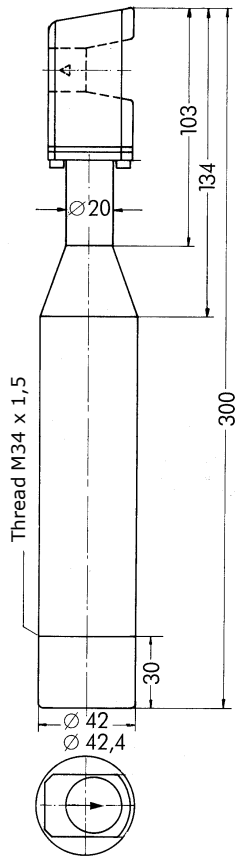
Length of cable up to cable amplifier for probes as in drawing 2 longer or shorter than 2 m, max. 10 m/3 m for probes for 180 °C / 240 °C

| | |
|------------------------|----------|
| Basic price probes VA | VAKLV |
| Basic price probes VAT | VAKLVT |
| Probe VA each m | VAKLV-M |
| Probe VAT each m | VAKLVT-M |

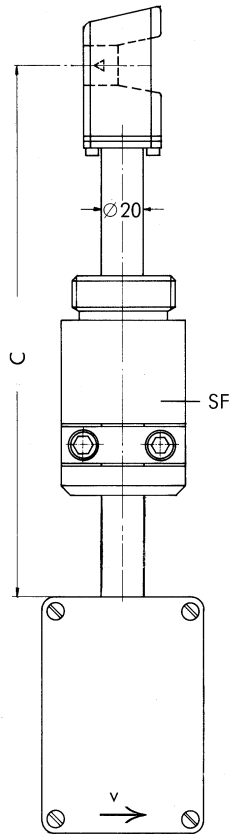


Probes

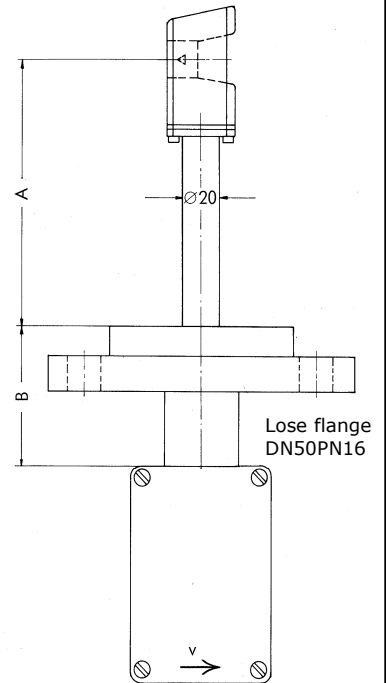
Drawing 2



Drawing 4



Drawing 5

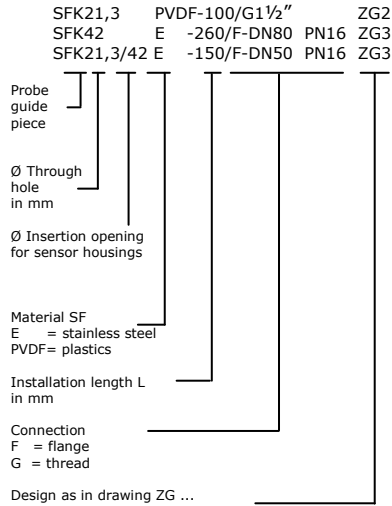


Probe exemplary portrayed with probe guide piece SF (other probe guide pieces can be found on page 4)

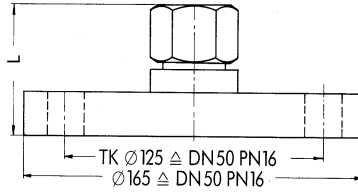


Probe guide pieces SF

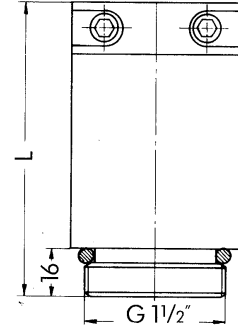
SFZ = SF with collet chuck
 SFK = SF mit clamp strap
 SFB = SF with clamping bush



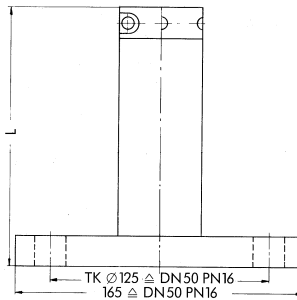
Drawing 1



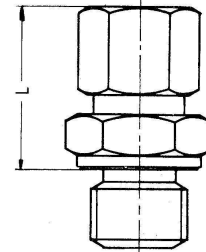
Drawing 2



Drawing 3



Drawing 5

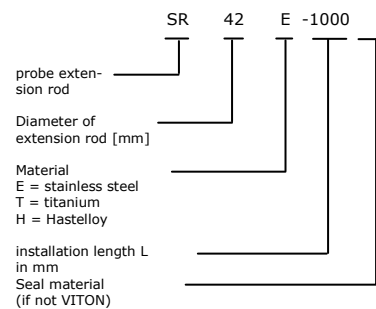


| | article no. |
|---|-------------|
| SFK 21,3 E- 150/F-DN40 PN16 ZG3 ²⁾ | B004/303 |
| SFK 21,3 E- 150/F-DN50 PN16 ZG3 ²⁾ | B004/304 |
| SFB 21,3 E-70/F-DN50 PN16 ZG1 ³⁾ | B004/103 |
| SFB 21,3 E-53/G1½" ZG5 ^{3) 4)} | B005/504 |
| SFB 21,3 E-80/G2" ZG5 ³⁾ | B005/505 |
| SFK 21,3 PVDF ¹⁾ -100/G1½" ZG2 ²⁾ | B004/206 |
| SFZ 21,3 PVDF ¹⁾ -125/F-DN50PN16 ZG3 ²⁾ | B004/305 |
| SFK 42 E-260/F-DN50 PN16 ZG3 ²⁾ | B004/307 |
| SFK 42 E-260/F-DN80 PN16 ZG3 ²⁾ | B004/308 |
| SFZ 42 PVDF ¹⁾ -225/F-DN50 PN16 ZG3 ²⁾ | B004/309 |
| SFK 42,4 E-260/F-DN50 PN16 ZG3 ²⁾ | B004/310 |
| SFK 42,4 E-260/F-DN80 PN16 ZG3 ²⁾ | B004/311 |
| SFZ 42,4 PVDF ¹⁾ -225/F-DN50PN16 ZG3 ²⁾ | B004/312 |
| SFK 21,3/42 E-150/F-DN50 PN16 ZG3 ²⁾ with flanged ball valve DN50PN16 ball valve approx. 150 mm long | B004/313 |
| SFK 21,3/42 E-150/F-DN50 PN16 ZG3 ²⁾ (without flange ball valve DN50PN16) | B004/314 |

1) for max +120 °C

Seal material:

- 2) VITON® lip seal
 - 3) TEFLON® clamping bush
 - 4) VITON®
- ® DuPont trademark



| Probe extensions for probes as in drawing 2 | article no. |
|---|-------------|
| SR42E-350 | B099/510 |
| SR42E-500 | B099/511 |
| SR42E-1000 | B099/512 |
| SR42,4H-500 | B099/513 |
| SR42,4H-1000 | B099/514 |
| SR42T-500 | B099/515 |

Höntzsch GmbH

P.O. Box 1324 D-71303 Waiblingen
 Gottlieb-Daimler-Straße 37
 D-71334 Waiblingen (Hegnach)
 Telephone 07151/1716-0
 Facsimile 07151/58402
 E-Mail info@hoentzsch.com

จัดจำหน่ายโดย

บริษัท โอมิแก้า เมชเชอริง อินสตรูเมนต์ จำกัด
 50/23 หมู่ 3 ต.มหาสวัสดิ์ อ.บางกรวย จ.นนทบุรี 11130
 Tel : 02 105 4676
 Fax : 02 903 0080 ext. 6867
 Email : info@omi.co.th