

## MULTICHANNEL THERMOCOUPLE DATA LOGGER TC-log 8 S USB

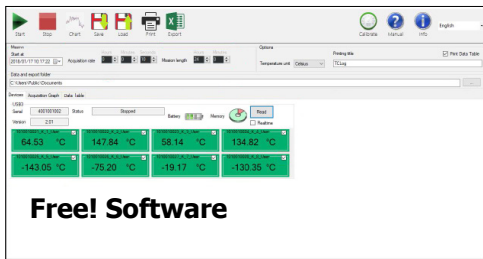


### Features

- Use with thermocouple of type K or T, installed from manufacturer
- Compact, robust and high temperatures resistant
- Easy to use
- Quick response time
- Real time monitoring if connected to a PC via the USB interface
- User replaceable battery.

### Technical data

**Temperature range :** -60...+130°C  
**Number of channel :** 8 channels (*able to customize*)  
**Thermocouple type :** type K and T, installed from manufacturer  
**Logger accuracy :** ±0.5 (within 0...+75°C), otherwise ±1°C  
**Logger accuracy (option) :** ±0.2°C (calibration at -40/25/125°C with Accredia traceable certificate)  
**Resolution :** 0.15 °C  
**Interval :** 1s...1hr  
**Memory capacity :** 8 channels, 16,383 acquisitions per thermocouple  
**Battery type :** AA 3.6V lithium 2Ah  
**Battery life (@different interval) :** more than 3 years @ 1 minutes or 50 days @ 1 second (4,320,000 acquisitions at 1 second step continuously calculated time @25°C. Battery life may be shorter if used in low temperatures)  
**Material :** Alumide  
**Operate system :** Windows 7, 8, 10 (32, 64 bit)  
**Exporting :** Excel  
**Dimension :** 50 x 95 x 26 (WxHxD)  
**Weight :** 90g



**Free! Software**



**Free! Micro-USB**  
For configuration and download data

### Application



**Autoclave/Retort**



**laboratory**



**Food & Beverage industries**



**Transportation**

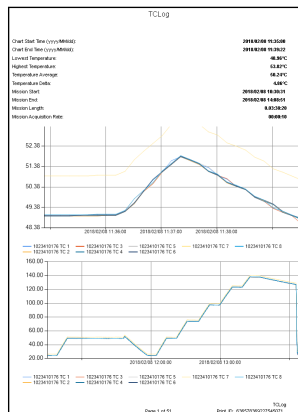
### Ordering code

TC-log 8 S USB -  -

**K :** Thermocouple type K  
**T :** Thermocouple type T

**X :** Number of channels  
*\*maximum 8 channels*

### Report data



Time	TC1	TC2	TC3	TC4	TC5	TC6	TC7	TC8
2016/08/10 09:51	23.86	23.86	23.86	23.75	23.86	23.86	23.86	23.86
2016/08/10 09:52	24.01	24.01	24.01	23.90	24.01	24.01	24.01	24.01
2016/08/10 09:53	24.16	24.16	24.16	24.05	24.16	24.16	24.16	24.16
2016/08/10 09:54	24.31	24.31	24.31	24.20	24.31	24.31	24.31	24.31
2016/08/10 09:55	24.46	24.46	24.46	24.35	24.46	24.46	24.46	24.46
2016/08/10 09:56	24.61	24.61	24.61	24.50	24.61	24.61	24.61	24.61
2016/08/10 09:57	24.76	24.76	24.76	24.65	24.76	24.76	24.76	24.76
2016/08/10 09:58	24.91	24.91	24.91	24.80	24.91	24.91	24.91	24.91
2016/08/10 09:59	25.06	25.06	25.06	24.95	25.06	25.06	25.06	25.06
2016/08/10 10:00	25.21	25.21	25.21	25.10	25.21	25.21	25.21	25.21
2016/08/10 10:01	25.36	25.36	25.36	25.25	25.36	25.36	25.36	25.36
2016/08/10 10:02	25.51	25.51	25.51	25.40	25.51	25.51	25.51	25.51
2016/08/10 10:03	25.66	25.66	25.66	25.55	25.66	25.66	25.66	25.66
2016/08/10 10:04	25.81	25.81	25.81	25.70	25.81	25.81	25.81	25.81
2016/08/10 10:05	25.96	25.96	25.96	25.85	25.96	25.96	25.96	25.96
2016/08/10 10:06	26.11	26.11	26.11	26.00	26.11	26.11	26.11	26.11
2016/08/10 10:07	26.26	26.26	26.26	26.15	26.26	26.26	26.26	26.26
2016/08/10 10:08	26.41	26.41	26.41	26.30	26.41	26.41	26.41	26.41
2016/08/10 10:09	26.56	26.56	26.56	26.45	26.56	26.56	26.56	26.56
2016/08/10 10:10	26.71	26.71	26.71	26.60	26.71	26.71	26.71	26.71
2016/08/10 10:11	26.86	26.86	26.86	26.75	26.86	26.86	26.86	26.86
2016/08/10 10:12	27.01	27.01	27.01	26.90	27.01	27.01	27.01	27.01
2016/08/10 10:13	27.16	27.16	27.16	27.05	27.16	27.16	27.16	27.16
2016/08/10 10:14	27.31	27.31	27.31	27.20	27.31	27.31	27.31	27.31
2016/08/10 10:15	27.46	27.46	27.46	27.35	27.46	27.46	27.46	27.46
2016/08/10 10:16	27.61	27.61	27.61	27.50	27.61	27.61	27.61	27.61
2016/08/10 10:17	27.76	27.76	27.76	27.65	27.76	27.76	27.76	27.76
2016/08/10 10:18	27.91	27.91	27.91	27.80	27.91	27.91	27.91	27.91
2016/08/10 10:19	28.06	28.06	28.06	27.95	28.06	28.06	28.06	28.06
2016/08/10 10:20	28.21	28.21	28.21	28.10	28.21	28.21	28.21	28.21
2016/08/10 10:21	28.36	28.36	28.36	28.25	28.36	28.36	28.36	28.36
2016/08/10 10:22	28.51	28.51	28.51	28.40	28.51	28.51	28.51	28.51
2016/08/10 10:23	28.66	28.66	28.66	28.55	28.66	28.66	28.66	28.66
2016/08/10 10:24	28.81	28.81	28.81	28.70	28.81	28.81	28.81	28.81
2016/08/10 10:25	28.96	28.96	28.96	28.85	28.96	28.96	28.96	28.96
2016/08/10 10:26	29.11	29.11	29.11	29.00	29.11	29.11	29.11	29.11
2016/08/10 10:27	29.26	29.26	29.26	29.15	29.26	29.26	29.26	29.26
2016/08/10 10:28	29.41	29.41	29.41	29.30	29.41	29.41	29.41	29.41
2016/08/10 10:29	29.56	29.56	29.56	29.45	29.56	29.56	29.56	29.56
2016/08/10 10:30	29.71	29.71	29.71	29.60	29.71	29.71	29.71	29.71
2016/08/10 10:31	29.86	29.86	29.86	29.75	29.86	29.86	29.86	29.86

**Summary graph**

**Table**

**www.omi.co.th**

**Omega Measuring Instrument Co., Ltd.**  
 Tel : 02-105-4676  
 Fax : 02-903-0080 ext. 6867  
 Email : info@omi.co.th  
 Line : @omith

# MULTICHANNEL THERMOCOUPLE DATA LOGGER TC-log 8 S USB

**High temperature Heat protection : HP-TC log TC-log 8 S USB (option)**

## Features

When you need a compact oven monitoring profiler, the TC-Log 8 S with its thermal protection is the ideal combination. The thermocouples, up to 8 and of any type, are connected directly inside the logger and the compact dimensions of the device and its thermal barrier allow it to be used even in confined spaces.

Using the TC-Log series loggers is easy: just start and download them by connecting directly to the USB port on board. The protection allows you to exceed the limit of 130 ° C allowing you to use the devices at much higher temperatures even for a long time.

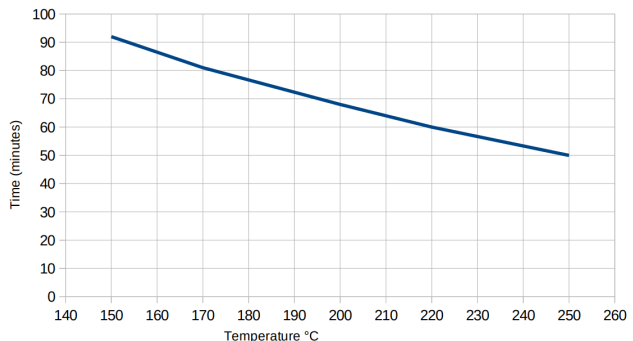


## Technical Data

**Temperature resistance :** maximum 250°C for 50 minutes  
**Dimension :** 200 X 145 X 65 (mm)  
**Weight :** 700g  
**Data loggers supported :** TC-Log 8 S USB

## Heat protection curve and Table

*The curve will show how long heat protection stand a temperature.*



Temperature (°C)	Time (minute)
150	92
170	81
200	68
220	60
250	50

[www.omi.co.th](http://www.omi.co.th)

**Omega Measuring Instrument Co., Ltd.**

Tel : 02-105-4676

Fax : 02-903-0080 ext. 6867

Email : info@omi.co.th

Line : @omith