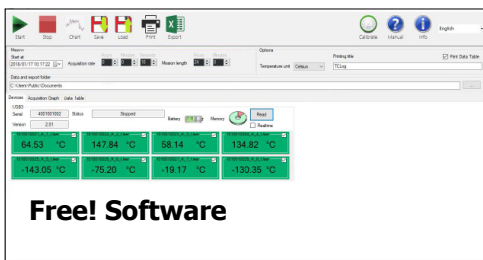
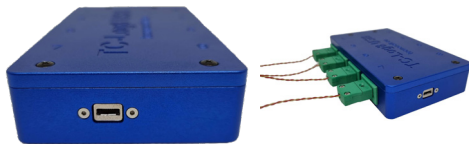


## MULTICHANNEL THERMOCOUPLE DATA LOGGER TC-log 8 USB K



**Free! Software**



**Free! Micro-USB**  
For configuration and download data

### Application



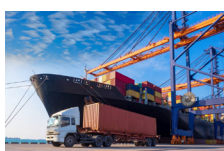
**Autoclave/Retort**



**laboratory**



**Food & Beverage industries**



**Transportation**

[www.omi.co.th](http://www.omi.co.th)

**Omega Measuring Instrument Co., Ltd.**  
Tel : 02-105-4676  
Fax : 02-903-0080 ext. 6867  
Email : info@omi.co.th  
Line : @omith

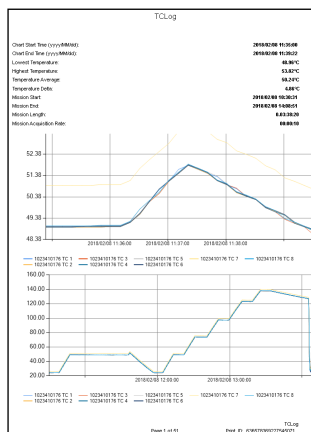
### Features

- Use with thermocouple type K only
- High temperatures resistant
- Easy to use
- Quick response time
- Real time monitoring if connected to a PC via the USB interface
- User replaceable battery.

### Technical data

**Input signal :** Thermocouple type K  
**Number of channel :** 8 channels  
**Temperature range :** depend on thermocouple probe  
**Operating temperature :** -60...+130°C  
**Logger accuracy :** ±0.5 (within 0...+75°C), ±1°C (within -40...-1°C and +76...+130°C)  
**Logger accuracy (option) :** ±0.2°C (calibration at -40/25/125°C and room temperature with Accredia traceable certificate)  
**Resolution :** 0.15 °C  
**Interval :** 1s...24hr  
**Memory capacity :** 8 channels, 16,383 acquisitions per thermocouple  
**Power supply :** AA 3.6V lithium 2Ah battery  
**Battery life (@different interval) :** more than 3 years @ 1 minutes or 50 days @ 1 second (4,320,000 acquisitions at 1 second step continuously calculated time @25°C. Battery life may be shorter if used in low temperatures)  
**Material device :** Alumide, ABS  
**Operate system :** Windows 7, 8, 10 (32, 64 bit)  
**Exporting :** PDF, Excel  
**Dimension :** 80 x 132 x 25 (WxHxD)  
**Weight :** 190g

### Report data



**Summary graph**

Time	TC1	TC2	TC3	TC4	TC5
2016/02/08 11:30:00	24.48	24.48	24.51	24.51	24.51
2016/02/08 11:30:01	24.48	24.48	24.50	24.50	24.50
2016/02/08 11:30:02	24.48	24.48	24.49	24.49	24.49
2016/02/08 11:30:03	24.48	24.48	24.48	24.48	24.48
2016/02/08 11:30:04	24.48	24.48	24.47	24.47	24.47
2016/02/08 11:30:05	24.48	24.48	24.46	24.46	24.46
2016/02/08 11:30:06	24.48	24.48	24.45	24.45	24.45
2016/02/08 11:30:07	24.48	24.48	24.44	24.44	24.44
2016/02/08 11:30:08	24.48	24.48	24.43	24.43	24.43
2016/02/08 11:30:09	24.48	24.48	24.42	24.42	24.42
2016/02/08 11:30:10	24.48	24.48	24.41	24.41	24.41
2016/02/08 11:30:11	24.48	24.48	24.40	24.40	24.40
2016/02/08 11:30:12	24.48	24.48	24.39	24.39	24.39
2016/02/08 11:30:13	24.48	24.48	24.38	24.38	24.38
2016/02/08 11:30:14	24.48	24.48	24.37	24.37	24.37
2016/02/08 11:30:15	24.48	24.48	24.36	24.36	24.36
2016/02/08 11:30:16	24.48	24.48	24.35	24.35	24.35
2016/02/08 11:30:17	24.48	24.48	24.34	24.34	24.34
2016/02/08 11:30:18	24.48	24.48	24.33	24.33	24.33
2016/02/08 11:30:19	24.48	24.48	24.32	24.32	24.32
2016/02/08 11:30:20	24.48	24.48	24.31	24.31	24.31
2016/02/08 11:30:21	24.48	24.48	24.30	24.30	24.30
2016/02/08 11:30:22	24.48	24.48	24.29	24.29	24.29
2016/02/08 11:30:23	24.48	24.48	24.28	24.28	24.28
2016/02/08 11:30:24	24.48	24.48	24.27	24.27	24.27
2016/02/08 11:30:25	24.48	24.48	24.26	24.26	24.26
2016/02/08 11:30:26	24.48	24.48	24.25	24.25	24.25
2016/02/08 11:30:27	24.48	24.48	24.24	24.24	24.24
2016/02/08 11:30:28	24.48	24.48	24.23	24.23	24.23
2016/02/08 11:30:29	24.48	24.48	24.22	24.22	24.22
2016/02/08 11:30:30	24.48	24.48	24.21	24.21	24.21
2016/02/08 11:30:31	24.48	24.48	24.20	24.20	24.20
2016/02/08 11:30:32	24.48	24.48	24.19	24.19	24.19
2016/02/08 11:30:33	24.48	24.48	24.18	24.18	24.18
2016/02/08 11:30:34	24.48	24.48	24.17	24.17	24.17
2016/02/08 11:30:35	24.48	24.48	24.16	24.16	24.16
2016/02/08 11:30:36	24.48	24.48	24.15	24.15	24.15
2016/02/08 11:30:37	24.48	24.48	24.14	24.14	24.14
2016/02/08 11:30:38	24.48	24.48	24.13	24.13	24.13
2016/02/08 11:30:39	24.48	24.48	24.12	24.12	24.12
2016/02/08 11:30:40	24.48	24.48	24.11	24.11	24.11
2016/02/08 11:30:41	24.48	24.48	24.10	24.10	24.10
2016/02/08 11:30:42	24.48	24.48	24.09	24.09	24.09
2016/02/08 11:30:43	24.48	24.48	24.08	24.08	24.08
2016/02/08 11:30:44	24.48	24.48	24.07	24.07	24.07
2016/02/08 11:30:45	24.48	24.48	24.06	24.06	24.06
2016/02/08 11:30:46	24.48	24.48	24.05	24.05	24.05
2016/02/08 11:30:47	24.48	24.48	24.04	24.04	24.04
2016/02/08 11:30:48	24.48	24.48	24.03	24.03	24.03
2016/02/08 11:30:49	24.48	24.48	24.02	24.02	24.02
2016/02/08 11:30:50	24.48	24.48	24.01	24.01	24.01
2016/02/08 11:30:51	24.48	24.48	24.00	24.00	24.00

**Table**

# MULTICHANNEL THERMOCOUPLE DATA LOGGER TC-log 8 USB K

**High temperature Heat protection : HP-TC-log 8 USB (option)**

## Features

The loggers of the TC-LOG series are ideal for monitoring baking processes in a variety of applications. To be perfect profilers, however, they must be able to withstand temperatures above 130 ° C for a certain time, the limit for these devices. Here, then, that the thermal protections intervene, barriers against the heat of the environment to preserve the data loggers for the entire duration of the process. This protection is suitable for TC-Log 8 USB models, for thermocouples with connector. The logger is wrapped in layers of insulating material and the protection is strong and sturdy, with a through hole for the sensors.



## Technical Data

**Temperature resistance :** maximum 300°C for 95 minutes

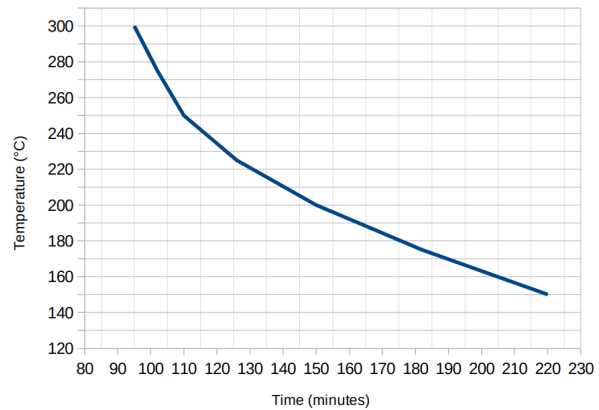
**Dimension :** 290 x 280 x 100 mm

**Weight :** 5.7 kg

**Data logger supported :** TC-Log 8 USB, TC-Log 8 K USB and TC-Log 8 T USB

## Heat protection curve and Table

*The curve will show how long heat protection stand a temperature.*



Temperature (°C)	Time (minute)
150	220
175	182
200	150
225	126
250	110
275	102
300	95

**www.omi.co.th**

**Omega Measuring Instrument Co., Ltd.**

Tel : 02-105-4676

Fax : 02-903-0080 ext. 6867

Email : info@omi.co.th

Line : @omith