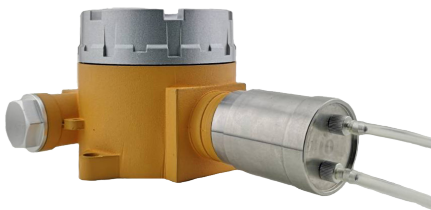
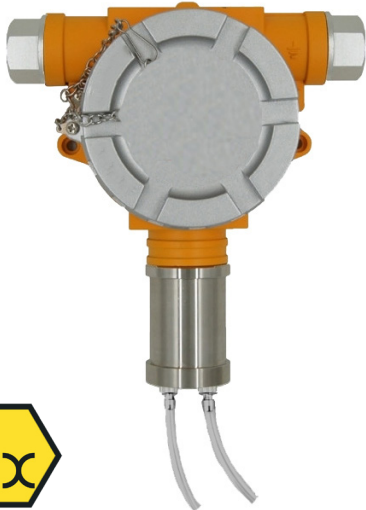


GAS DETECTOR GNP-P-CI2



sensor made in Switzerland



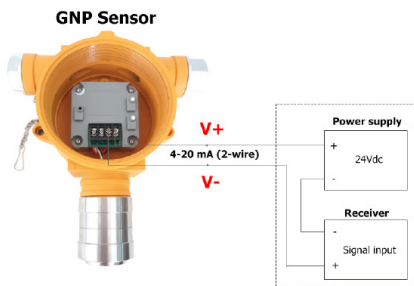
Features

- High quality sensor of Membrapor brand from Switzerland
- Good sealing, anti-corrosion, explosion-proof and anti EMI, RFI function
- Round casting stainless steel housing is suitable for offshore platforms, as well as high temperature, high humidity and other harsh environments

Technical Data

Gas type : Chlorine (Cl₂)
Measuring type : Pipeline
Measuring range : 0...20/ 200/ 2000/ 3000/ 5000 ppm
Accuracy : ±2 %FS
Resolution : 0.01/ 0.1/ 1/ 1/ 1 ppm
Sensor type : Electrochemical
Life expectancy : 1...3 years
Pre-Heating time : 60 sec
Operating temperature (body) : -20...+60 °C
Operating temperature (sensor) : 0...+50 °C
Operating humidity : 0...85 %RH
Operating pressure : 700...1300 mbar
Operating Gas flow rate : 0.4 - 0.8 l/min (Recommend 0.5 l/min)
Signal output : 4-20 mA (2-wire)
Power supply : 24 Vdc
Current consumption : 20...200 mA
Power consumption : ≤ 3W
Pipe connection : connection for tube I.D 4 mm
Body dimension : 195 x 178 x 90mm (H x L x D)
Weight : 1.65 kg
Body material : Cast aluminum
Electrical connection : M26 x P2.0
Explosion proof : Ex d IIC T6 Gb
Protection : IP65

Wiring diagram



Ordering code

GNP - P - CI2 -
 |
20 : Range 0...20 ppm
200 : Range 0...200 ppm
2000 : Range 0...2000 ppm
3000 : Range 0...3000 ppm
5000 : Range 0...5000 ppm

www.omi.co.th

Omega Measuring Instrument Co., Ltd.
 Tel : 02-105-4676
 Fax : 02-903-0080 ext. 6867
 Email : info@omi.co.th
 Line : @omith

