

## MOISTURE PROBE TRIME-PICO32



### Features

- For measurement of the moisture content in soil, sandy and loamy soils, etc
- Precise measuring results are guaranteed even in heterogeneous and skeletal soils
- Includes an integrated temperature sensor
- Operational up to more than 12dS/m soil conductivity
- Measuring volume 500 ml
- Installation could be vertically or horizontally
- TRIME®-TDR Winner of multiple awards. Innovation awards, such as the Bauma Innovation Award 2016 and DLG Approved certification from the German Agricultural Society (DLG - 2018) it is unaffected by steam or changing particle sizes of sand and gravel

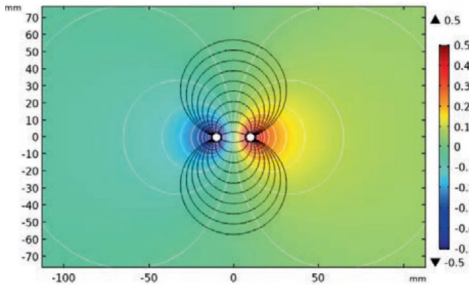
### Technical data

Measurement	Range	Accuracy
Moisture	0...100% H <sub>2</sub> O (depending on materials)	
Conductivity	0..12dS/m	±0.3%
Temperature	-15...+50°C	±1.5°C

**Material type :** soil, sandy and loamy soils, etc  
**Measurement volume :** approx. 500 ml  
**Operating temperature :** -15...+50°C  
**Power supply :** 7...24Vdc  
**Power consumption :** 12Vdc, 100mA  
**Material probe body :** waterproof seal PVC  
**Dimension :** 155 x Ø32 mm  
**Rod length :** 110 mm  
**Rod diameter :** 3.5 mm  
**Interface :** 1.5m cable with 7-pin female connector  
**Protection class :** IP68



### Drawing



Qualitative representation of the PICO32 measuring field distribution

### www.omi.co.th

**Omega Measuring Instrument Co., Ltd.**  
 Tel : 02-105-4676  
 Fax : 02-903-0080 ext. 6867  
 Email : info@omi.co.th  
 Line : @omith



## AVAILABLE MATERIALS for TRIME-PICO32

The TRIME-PICO32 is suited for measuring of soil, sandy and loamy soils, etc

- **Soils**

For example....



Soil



Sandy soil



Loam soil



*Furthermore, these materials that are shown, please do not hesitate to contact us for consulting*