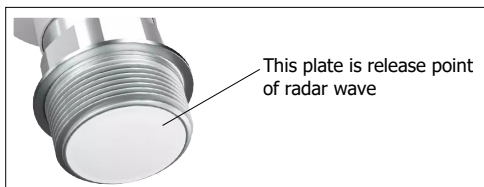
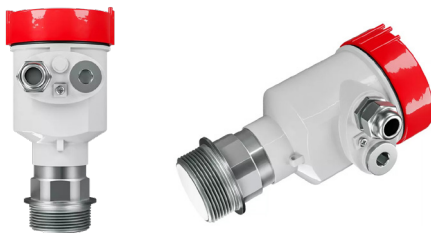


## RADAR LEVEL METER RM-1000



### Application



### Features

- High frequency up to 80 GHz for harsh condition such as high dust, smoke.
- Designed for liquid and bulk solids material
- Up to 20 meters measuring range
- suitable for a variety of complex conditions and applications. Such as: high temperature, high pressure and low dielectric constant media.
- High-quality waterproof connector
- Pulse work launch frequency of low impact on people and the environment

### Technical Data

**Application :** liquid and bulk solids material

**Measuring Range :** 0...5/10/15/20 m.

**Accuracy :** 0.1% of full scale

**Resolution :** 1 mm

**Measurement units :** mm, cm, m, %, kg, t

**Measurement display :** Number or Graph

**Beam angle :** 5°

**Blind area :** 30 cm

**Frequency Range :** 76...81 GHz

**Process temperature :** -30...+150°C

**Process pressure :** -0.1...4 Mpa

**Ambient temperature :** -20...+80 °C

**Vibration resistance :** 10 m/s<sup>2</sup>, (10...150) Hz

**Process connection :** Thread G 1" 1/2 (standard), Flange (option)

**Material (Antenna) :** 316L Stainless Steel

**Material (Head) :** Aluminum

**Signal output (Standard) :** 4...20 mA (2-wire)

**Signal output (Option) :** RS-485 (Modbus)

**Power supply :** 22...30Vdc

**Power consumption :** Max. 22.5 mA / 1 W

**Protection class :** IP67

[www.omi.co.th](http://www.omi.co.th)

**Omega Measuring Instrument Co., Ltd.**

Tel : 02-105-4676

Fax : 02-903-0080 ext. 6867

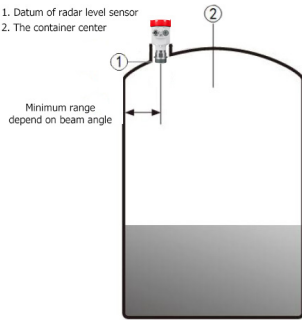
Email : [info@omi.co.th](mailto:info@omi.co.th)

Line : @omith

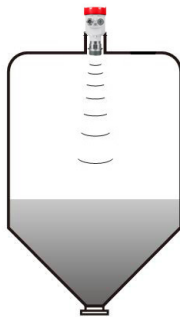
## RADAR LEVEL METER RM-1000

### Precaution

- Be installed in the diameter of the 1/4 or 1/6.

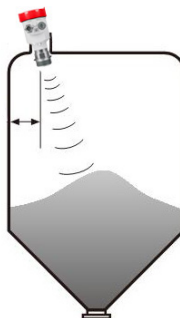


- The top conical tank level, can be installed at the top of the tank is intermediate, can guarantee the measurement to the conical bottom.

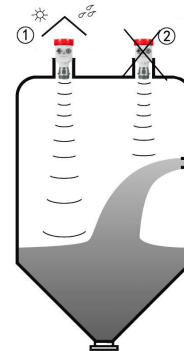


- A feed antenna to the vertical alignment surface. If the surface is rough, stack angle must be used to adjust the angle of cardan flange of the antenna to the alignment surface.

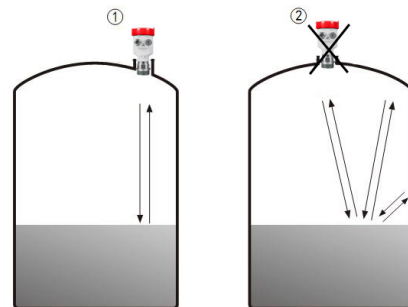
(Due to the solid surface tilt will cause the echo-attenuation, even Loss of signal.)



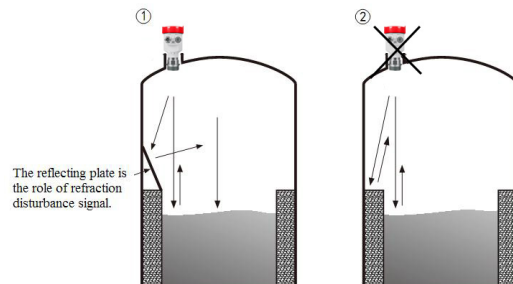
- Conical tank cannot be installed above the feed port.



- The instrument cannot be installed in the arched or domed roof intermediate. In addition to produce indirect echo is also affected by the echoes. Multiple echo can be larger than the real value of signal echo, because through the top can concentrate multiple echo. So cannot be installed in a central location.



- There are obstacles affecting measurement needed reflection plate.



## RADAR LEVEL METER RM-1000

### Ordering Code

|                                     |  |
|-------------------------------------|--|
| <b>Series : RM-1000-xx-xxx-x</b>    |  |
| <b>xx : Level range</b>             |  |
| <b>5</b> : range 0...5 m            |  |
| <b>10</b> : range 0...10 m          |  |
| <b>15</b> : range 0...15 m          |  |
| <b>20</b> : range 0...20 m          |  |
| <b>x : Signal output</b>            |  |
| - : 4-20 mA (2-wires)               |  |
| <b>D</b> : RS485                    |  |
| <b>x : Other option</b>             |  |
| - : Thread connecting G1" 1/2       |  |
| <b>F32</b> : Flange connecting DN32 |  |
| <b>F50</b> : Flange connecting DN50 |  |

**Example : RM-1000-20**  
Radar level meter range 0...20 m, Signal output 4-20mA