

TEMPERATURE DATA LOGGER DT1922E

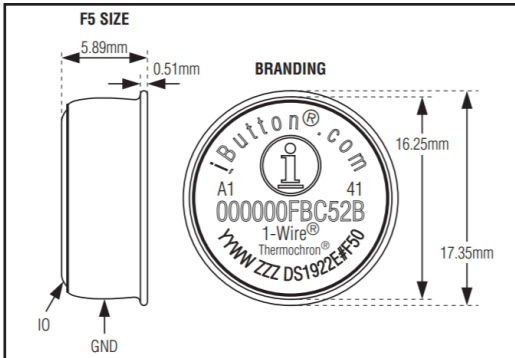
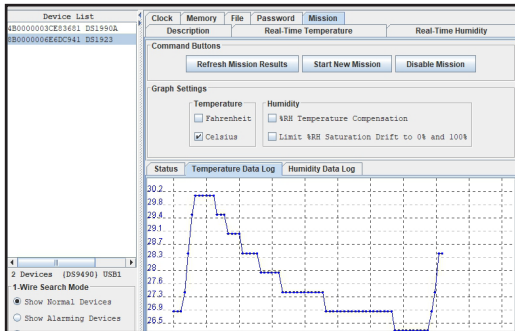
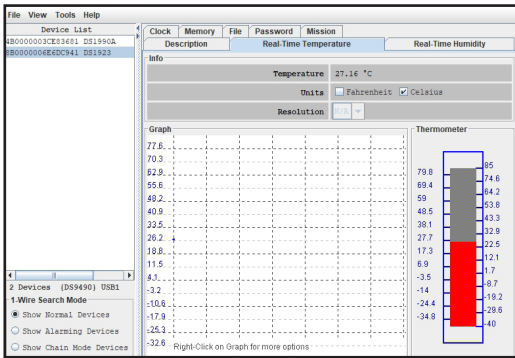


Features

- High temperature application
- Small dimension
- Low price
- Suitable for food preparation and processing, environmental studies/ monitoring.

Technical Data

Temperature range : +15...+140 °C
Temperature resolution : ±0.5 °C
Temperature Accuracy : ±1.5 °C (from +110 to +140 °C)
 ±7.0 °C (from +15 to +110 °C)
Sampling rate : 1s to 273hr (Programable)
Storage data : 4096 data
Export file : Exel
Battery Life : Storage or operation above +50°C significantly reduces battery life with an upper limit of 300hr cumulative at +140°C. The recommended storage temperature for maximum battery lifetime is between +5°C and +35°C
Dimension : Ø17.35 mm x 5.89 mm
Protection : IP56



www.omi.co.th

บริษัท โอเมกา แมซซเจอร์ริง อินสตรูเมนต์ จำกัด
 Tel : 02-105-4676
 Fax : 02-903-0080 ext. 6867
 Email : info@omi.co.th
 Line : @omith

Export file

Date/Time	Unit	Value							
23/7/2563	13:32:36	C	27.097						
23/7/2563	13:32:46	C	27.097						
23/7/2563	13:32:56	C	27.097						
23/7/2563	13:33:06	C	27.597						
23/7/2563	13:33:16	C	28.596						
23/7/2563	13:33:26	C	29.595						
23/7/2563	13:33:36	C	30.095						
23/7/2563	13:33:46	C	30.095						
23/7/2563	13:33:56	C	30.095						
23/7/2563	13:34:06	C	30.095						
23/7/2563	13:34:16	C	30.095						
23/7/2563	13:34:26	C	30.095						
23/7/2563	13:34:36	C	29.595						
23/7/2563	13:34:46	C	29.595						
23/7/2563	13:34:56	C	29.595						

Accessories (Option)



Model : DT9490
Description : USB interface for connecting with PC



Model : PT68
Description : Protective capsule for data logger (IP68)