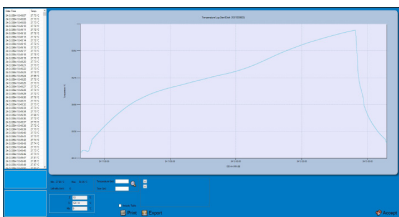
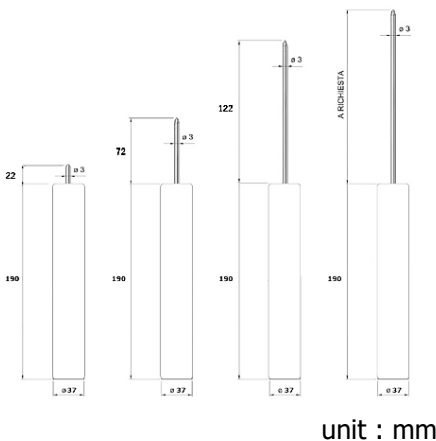


## HIGH TEMPERATURE DATA LOGGER MicroW XL HP1



### Drawing



### Ordering code

**MicroW XL HP1**

- 50** : Probe length 22 mm
- 100** : Probe length 72 mm
- 150** : Probe length 122 mm
- xx** : Probe length 22...147 mm

[www.omi.co.th](http://www.omi.co.th)

**Omega Measuring Instrument Co., Ltd.**

Tel : 02-105-4676  
Fax : 02-903-0080 ext. 6867  
Email : info@omi.co.th  
Line : @omith

### Features

- Prevent up to 250°C maximum 17 minutes
- With different lengths rigid probe for penetration
- Completely food grade and waterproof
- All software calculate lethality value (F0, PU, A0 ecc.)
- long live battery and user replaceable battery (software shows battery status)
- Very easy to deploy in any type of package
- Accredia (NIST equivalent) traceable calibration certificate included
- Available extended calibration from -40°C to 250°C (order extra calibration points; in case of wide calibration range the accuracy might be worse. Request the possible calibration ranges in advance)
- Application for Sterilisation, Pasteurisation, Food and Beverage, Pharmaceutical, Healthcare, Medical, Cosmetics, Laboratories, Validation

### Technical data

- Temperature range** : -40...+250°C
- Accuracy** : ± 0.1°C (valid in the calibration range)
- Accuracy (Option)** : ± 0.05°C (high accuracy calibration)
- Resolution** : 0.01 °C
- Operating temperature** : -40...+140°C (*permanently*)  
+141...+250°C (*see on page 2, temperature operating table*)
- Memory capacity** : 20,224 reading
- Battery type** : high temperature Lithium battery
- Battery life (@different interval)** : more than 5 years @ 30 seconds or 6 months @ 1 second (17,000,000 acquisitions @ 1 second step continuously (calculated time @25°C)). Storage or operation above +50°C significantly reduces battery life.
- Interval** : 1s...24hr
- Material** : Teflon (body), Stainless steel AISI316L, PEEK (logger)
- Operate system** : Windows 10, 11 (32/64 bit)
- Exporting** : PDF, Excel
- Dimension** : Φ37 x 190h mm
- Weight** : 478g
- Protection type** : IP68

### Application



Autoclave



Sterilization process



pasteurization process



Oven/Retort

*\*Note: Furthermore, these process that are shown, please do not hesitate to contact us for consulting*

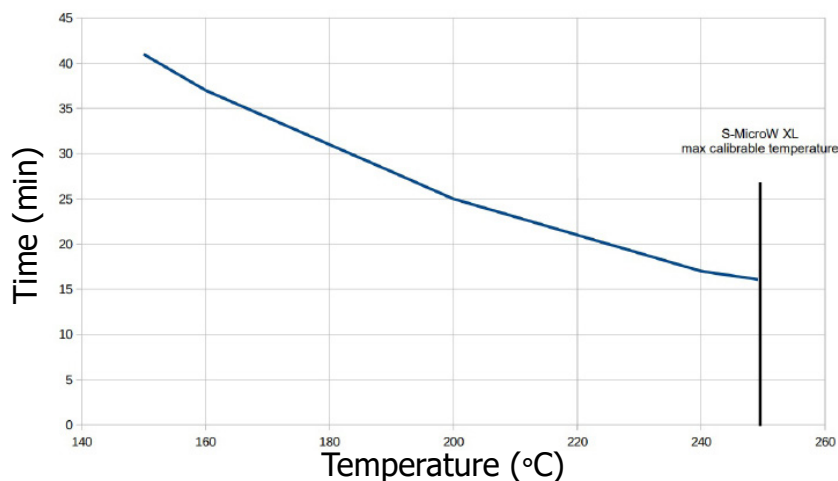
## HIGH TEMPERATURE DATA LOGGER MicroW XL HP1



Temperature (°C)	Time (min)
150	42
160	37
170	34
180	31
190	27
200	25
210	23
220	21
230	19
240	18
250	17

**Listed specifications** can be used to determine maximum allowable times for the S-MicroW XL HP1 at different temperature range. The data logger must be at ambient temperature (approximately 25 °C) before being placed in extreme temperature environment. After using it, the data logger should be placed in a water bath (approximately 25 °C) for at least 15 minutes to allow it to cool. Failing to do this may allow heat trapped to potentially unsafe levels.

### The relative of temperature and time's data logger



[www.omi.co.th](http://www.omi.co.th)

**Omega Measuring Instrument Co., Ltd.**

Tel : 02-105-4676

Fax : 02-903-0080 ext. 6867

Email : [info@omi.co.th](mailto:info@omi.co.th)

Line : @omith

## HIGH TEMPERATURE DATA LOGGER MicroW XL HP1

### Accessories

These are necessary equipments that using with products and increase efficiency.

**DiskInterface HS :** is the connection bay used for downloading data and programming all models of high temperature data loggers



**Universal Multibay :** is the multiple connection bay used for downloading data and programming all models of high temperature data loggers. It allows to connect up to 5 data loggers of each supported model to be programmed and downloaded at the same time.



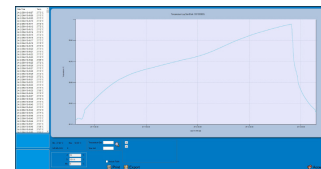
**TS17MU :** use to open data loggers for battery replacement.  
*Note : For all of **sterilDisk** model, need 2 items for opening*  
*For **others** model, need only 1 item for opening*



**TS18SMWXLBK :** Battery and O-ring can be used in all type of S-MicroW XL. if used below -30°C ,battery life will be highly reduced.



**SPD Software (FREE) :** It allows to start the devices setting the start delay, mission duration, notes. After download data are then displayed on graph, with zoom function, and table, exportable in Excel.



**TS Manager Software :** it allowed to do everything as a SPD software and has more functions such as multi-user, having login and password, Synchronized data table with statistics, etc. Downloadable from TecnoSoft website and works with its hardware protection key only.

